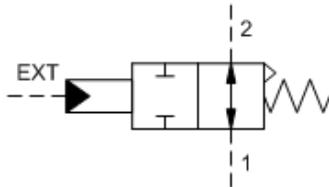
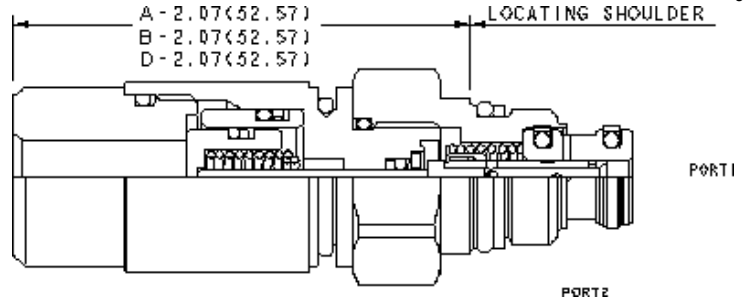


C-Spool



H-Spool



These pilot-stage, directional, 2-position, 2-way valves are hydraulically operated, spring-return cartridges and are available in either a normally open or normally closed configuration. These cartridges are designed for pilot flow applications and utilize Sun's T-8A cavity so they can be used in conjunction with Sun's pilot-operated, main-stage valves.

TECHNICAL DATA

NOTE: DATA MAY VARY BY CONFIGURATION. SEE CONFIGURATION SECTION.

Maximum Operating Pressure	350 bar
Maximum Valve Leakage at 110 SUS (24 cSt)	0,3 cc/min.
Minimum Pilot Pressure to Operate	See Technical Features
Pilot Control Port	See Control Options
Seal kit - Cartridge	Buna: 990508007
Seal kit - Cartridge	Viton: 990508006

CONFIGURATION OPTIONS

Model Code Example: **DAAHBCN**

CONTROL	(B) SPOOL CONFIGURATION	(C) SEAL MATERIAL	(N) MATERIAL/COATING
B External 4-SAE Port	C Normally Closed	N Buna-N	Standard Material/Coating
A External 1/8 NPTF Port	H Normally Open	V Viton	/AP Stainless Steel, Passivated
D External 1/8 BSPP Port			