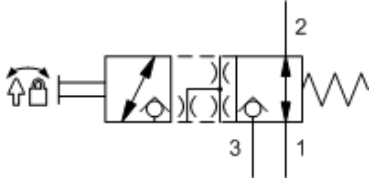
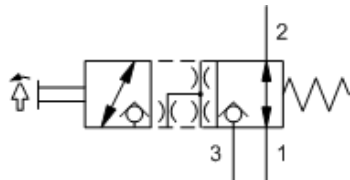


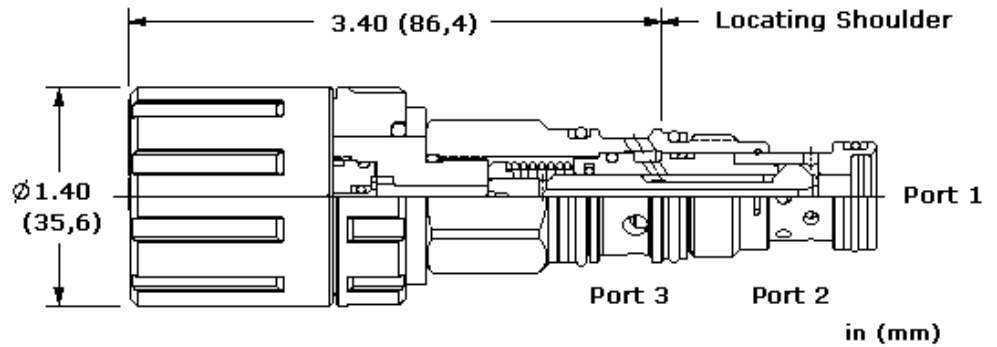
L-Control, A-Poppet



D-Control, A-Poppet



T-Control, A-Poppet



This manually operated, 2-position, 3-way directional cartridge is a direct-acting, poppet-style valve used to control the direction of flow in a hydraulic circuit. The valve is normally open between port 1 and port 2 with port 3 blocked. Operating the valve connects port 2 to 3 and blocks port 1. All flow paths are bidirectional and blocked paths are blocked in both directions. Due to the poppet style construction, this valve has extremely low leakage.

Manual operation is achieved via Sun's Twist/Lock manual override mechanism and is designed for intermittent (infrequent) use only.

TECHNICAL DATA

NOTE: DATA MAY VARY BY CONFIGURATION. SEE CONFIGURATION SECTION.

Maximum Operating Pressure	350 bar
Maximum Valve Leakage at 110 SUS (24 cSt)	0,7 cc/min.@350 bar
Operating Torque	1,2 Nm
Seal kit - Cartridge	Buna: 990411007
Seal kit - Cartridge	Viton: 990411006

CONFIGURATION OPTIONS

Model Code Example: DWDM LAN

CONTROL	(L)	POPPET CONFIGURATION	(A)	SEAL MATERIAL	(N)
L Twist/Lock (Detent) Manual Override		A Normally Open 1 to 2, Closed 2 to 3		N Buna-N	
D Twist/Lock (Dual) Manual Override				E EPDM	
T Twist (Momentary) Manual Override				V Viton	