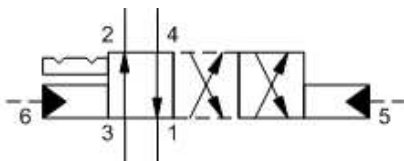


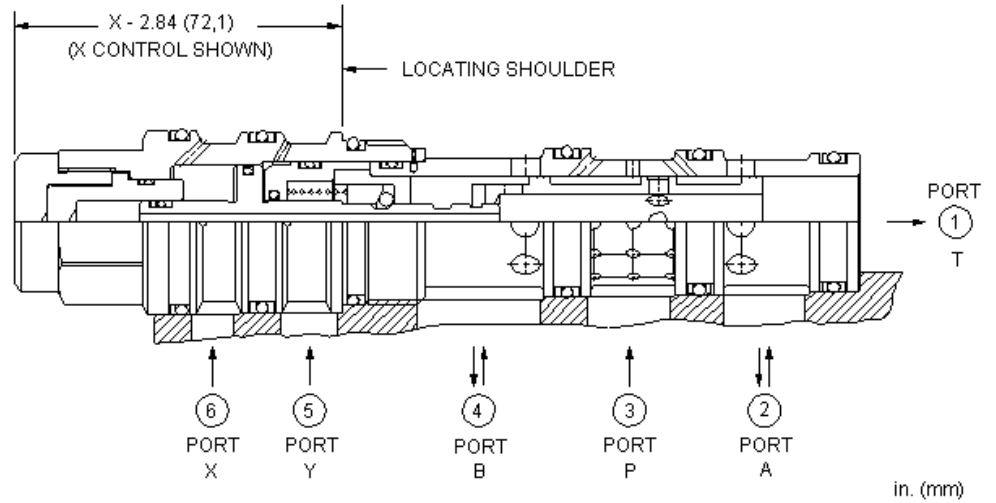
X-Control, C-Spool



X-Control, H-Spool



X-Control, X-Spool



Two-position, detented, 4-way directional cartridges are 6-port directional valves that can be configured with up to 3 different spool options. The supply port is port 3 and all ports will accept 5000 psi (350 bar). Capacity for these pilot-to-shift valves is dependent on the spool type specified.

TECHNICAL DATA

NOTE: DATA MAY VARY BY CONFIGURATION. SEE CONFIGURATION SECTION.

Minimum Pilot Pressure Required to Shift Valve	9 bar
Maximum Operating Pressure	350 bar
Maximum Valve Leakage at 110 SUS (24 cSt)	30 cc/min. @70 bar
Pilot Volume Displacement	5,6 cc
Seal kit - Cartridge	Buna: 990063007
Seal kit - Cartridge	Polyurethane: 990063002
Seal kit - Cartridge	Viton: 990063006

CONFIGURATION OPTIONS
Model Code Example: DCEDXCN

CONTROL	(X) SPOOL CONFIGURATION	(C) SEAL MATERIAL	(N) MATERIAL/COATING
X Standard Pilot	C Blocked Crossover H Open Crossover X P to B and A to T Crossover	N Buna-N V Viton	Standard Material/Coating /AP Stainless Steel, Passivated /LH Mild Steel, Zinc-Nickel