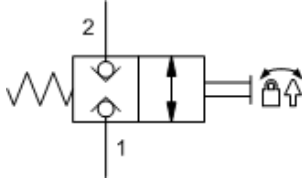
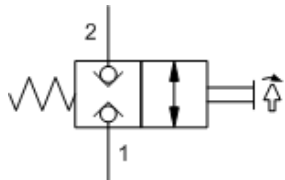


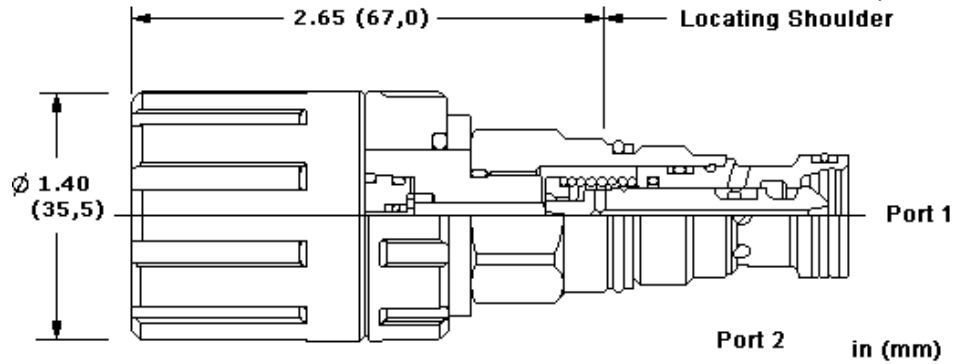
L-Control, C-Poppet



D-Control, C-Poppet



T-Control, C-Poppet



This manually operated, 2-position, 2-way directional cartridge is a direct-acting, poppet-style valve used to control the direction of flow in a hydraulic circuit. The valve is only available in a normally closed configuration. Manual operation is achieved via Sun's Twist/Lock manual override mechanism and is designed for intermittent (infrequent) use only. Due to the poppet-style construction, this valve has extremely low leakage.

Many poppet style directional valves pass a small amount of fluid when the pressure across them changes suddenly. This is due to the compressibility of the fluid. This valve has been designed to prevent this from happening.

TECHNICAL DATA

NOTE: DATA MAY VARY BY CONFIGURATION. SEE CONFIGURATION SECTION.

Maximum Operating Pressure	350 bar
Maximum Valve Leakage at 110 SUS (24 cSt)	0,7 cc/min.@350 bar
Operating Torque	1,2 Nm
Seal kit - Cartridge	Buna: 990413007
Seal kit - Cartridge	Polyurethane: 990413002
Seal kit - Cartridge	Viton: 990413006

CONFIGURATION OPTIONS

Model Code Example: DTCMLCN

CONTROL	(L)	SPOOL CONFIGURATION	(C)	SEAL MATERIAL	(N)
L Twist/Lock (Detent) Manual Override		C Normally Closed		N Buna-N	
D Twist/Lock (Dual) Manual Override				V Viton	
T Twist (Momentary) Manual Override					