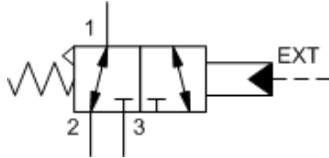
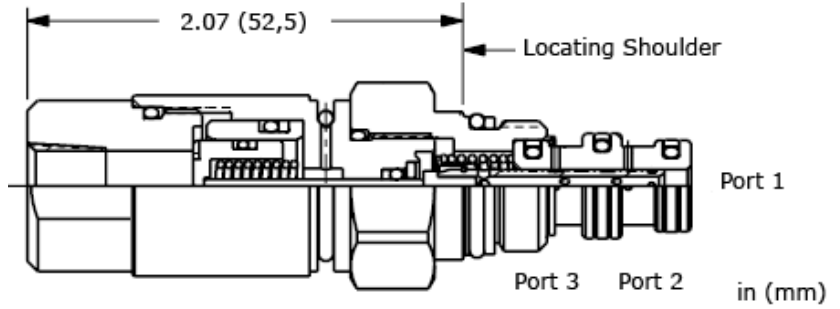


C-Spool



H-Spool



These pilot-stage, directional, 2-position, 3-way valves are hydraulically operated, spring-return cartridges and are available in two spool configurations; normally open 1 to 2 and normally open 1 to 3. These cartridges are designed for pilot flow applications.

TECHNICAL DATA

NOTE: DATA MAY VARY BY CONFIGURATION. SEE CONFIGURATION SECTION.

Maximum Operating Pressure	350 bar
Maximum Valve Leakage at 110 SUS (24 cSt)	0,7 cc/min.@350 bar
Minimum Pilot Pressure to Operate	See Technical Features
Pilot Control Port	See Control Options
Seal kit - Cartridge	Buna: 990509007
Seal kit - Cartridge	Viton: 990509006

CONFIGURATION OPTIONS

Model Code Example: DBAHBCN

CONTROL	(B) SPOOL CONFIGURATION	(C) SEAL MATERIAL	(N) MATERIAL/COATING
B External 4-SAE Port	C Normally Open 1 to 3, Closed 1 to 2	N Buna-N	Standard Material/Coating
A External 1/8 NPTF Port	H Normally Open 1 to 2, Closed 1 to 3	V Viton	/AP Stainless Steel, Passivated
D External 1/8 BSPP Port			