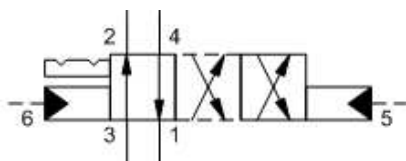


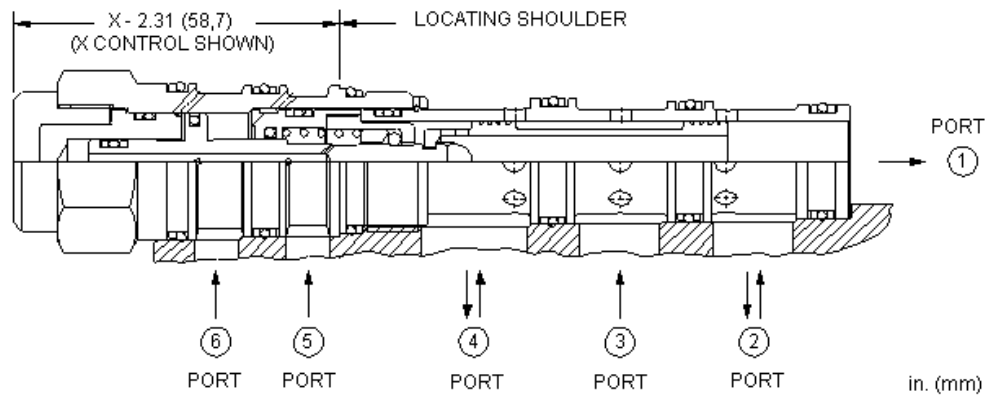
X-Control, C-Spool



X-Control, H-Spool



X-Control, X-Spool



Two-position, detented, 4-way directional cartridges are 6-port directional valves that can be configured with up to 3 different spool options. The supply port is port 3 and all ports will accept 5000 psi (350 bar). Capacity for these pilot-to-shift valves is dependent on the spool type specified.

TECHNICAL DATA

NOTE: DATA MAY VARY BY CONFIGURATION. SEE CONFIGURATION SECTION.

Minimum Pilot Pressure Required to Shift Valve	10,5 bar
Maximum Operating Pressure	350 bar
Maximum Valve Leakage at 110 SUS (24 cSt)	30 cc/min.@70 bar
Pilot Volume Displacement	2,0 cc
Seal kit - Cartridge	Buna: 990062007
Seal kit - Cartridge	Polyurethane: 990062002
Seal kit - Cartridge	Viton: 990062006

CONFIGURATION OPTIONS

Model Code Example: DCDDXCN

CONTROL	(X)	SPOOL CONFIGURATION	(C)	SEAL MATERIAL	(N)	MATERIAL/COATING
X Standard Pilot		C Blocked Crossover		N Buna-N		Standard Material/Coating
		H Open Crossover		V Viton		/AP Stainless Steel, Passivated
		X P to B and A to T Crossover				/LH Mild Steel, Zinc-Nickel