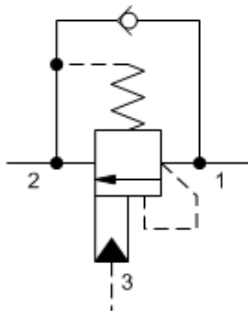
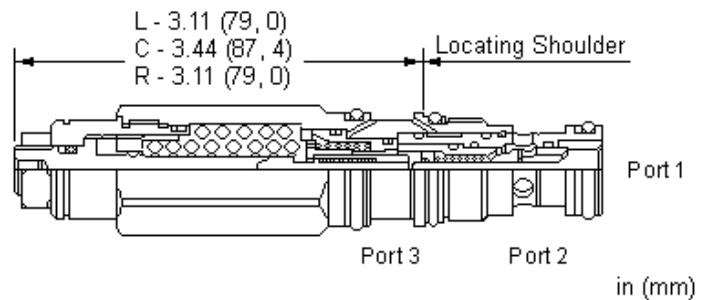


3-Port Non-vented



3-Port Non-vented, Fixed Setting



Counterbalance valves with pilot assist are meant to control an overrunning load. The check valve allows free flow from the directional valve (port 2) to the load (port 1) while a direct-acting, pilot-assisted relief valve controls flow from port 1 to port 2. Pilot assist at port 3 lowers the effective setting of the relief valve at a rate determined by the pilot ratio. The LoadAdaptive™ counterbalance valve has a higher pilot ratio when the load-induced pressure is less than the setting of the valve (is not moving yet) and when the moving load is a positive load (not overrunning). See P1-P3 diagrams under "Performance Curves." The P1 (Y axis) vs P3 (X axis) curves show the effective setting P1 of the valve for different flows depending on pilot pressure P3. [Click Here for LoadAdaptive Technical Tip](#)

Other names for this valve include motion control valve and over-center valve.

## TECHNICAL DATA

NOTE: DATA MAY VARY BY CONFIGURATION. SEE CONFIGURATION SECTION.

Pilot Ratio	3:1
Adaptive Pilot Ratio	See Performance Curves
Maximum Recommended Load Pressure at Maximum Setting	215 bar
Maximum Setting	280 bar
Factory Pressure Settings Established at	30 cc/min.
Maximum Valve Leakage at Reseat	0,3 cc/min.
Adjustment - No. of CCW Turns from Min. to Max. Setting	3.75
Reseat	>85% of setting
Locknut Hex Size	15 mm
Locknut Torque	9 - 10 Nm
Seal kit - Cartridge	Buna: 990011007
Seal kit - Cartridge	Polyurethane: 990011002
Seal kit - Cartridge	Viton: 990011006

**NOTES** Patents are pending for this product.

## CONFIGURATION OPTIONS

Model Code Example: CEBCLHN

CONTROL	(L) ADJUSTMENT RANGE	(H) SEAL MATERIAL	(N) MATERIAL/COATING
<b>L</b> Standard Screw Adjustment	<b>H</b> 1500 - 4000 psi w/ 25 psi check (105 - 280 bar w/ 1,7 bar Check), 3000 psi (210 bar) Standard Setting	<b>N</b> Buna-N	Standard Material/Coating
<b>C</b> Tamper Resistant - Factory Set	<b>A</b> 1500 - 4000 psi w/ 4 psi check (105 - 280 bar w/ 0,3 bar Check), 3000 psi (210 bar) Standard Setting	<b>V</b> Viton	/LH Mild Steel, Zinc-Nickel