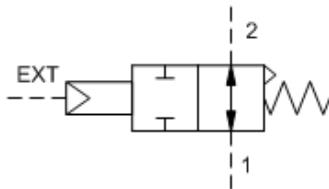
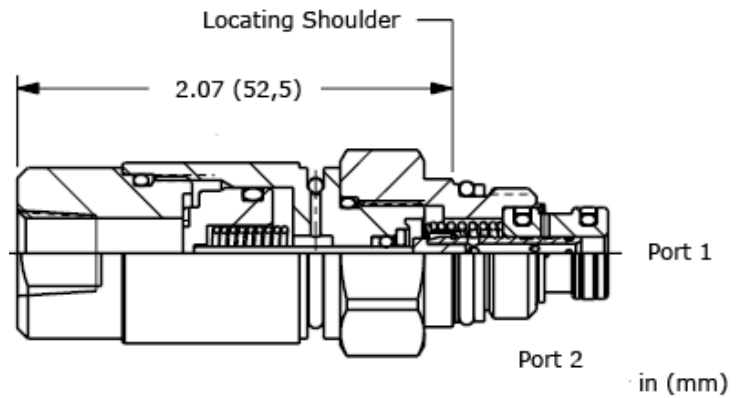


C-Spool



H-Spool



These pilot-stage, directional, 2-position, 2-way valves are pneumatically operated, spring-return cartridges and are available in either normally open or normally closed configurations. These cartridges are designed for pilot flow applications and utilize Sun's T-8A cavity so they can be used in conjunction with Sun's pilot-operated, main-stage valves.

### TECHNICAL DATA

NOTE: DATA MAY VARY BY CONFIGURATION. SEE CONFIGURATION SECTION.

Maximum Operating Pressure	350 bar
Maximum Valve Leakage at 110 SUS (24 cSt)	0,7 cc/min.@350 bar
Minimum Pilot Pressure to Operate	See Technical Features
Pilot Control Port	See Control Options
Seal kit - Cartridge	Buna: 990508007
Seal kit - Cartridge	Viton: 990508006

### CONFIGURATION OPTIONS

#### Model Code Example: DAAPFCN

CONTROL	(F) SPOOL CONFIGURATION	(C) SEAL MATERIAL	(N) MATERIAL/COATING
<b>F</b> External 1/8 NPTF Port	<b>C</b> Normally Closed	<b>N</b> Buna-N	Standard Material/Coating
<b>E</b> External 4-SAE Port	<b>H</b> Normally Open	<b>E</b> EPDM	/AP Stainless Steel, Passivated
<b>P</b> External 1/8 BSPP Port		<b>V</b> Viton	