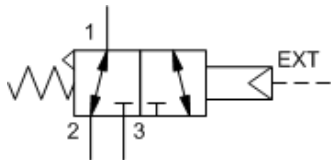
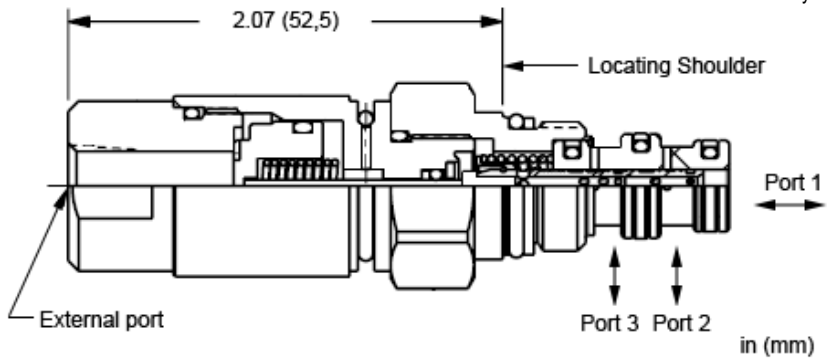


C-Spool



H-Spool



These pilot-stage, directional, 2-position, 3-way valves are pneumatically operated, spring-return cartridges and are available in two spool configurations; normally open 1 to 2 and normally open 1 to 3.

TECHNICAL DATA

NOTE: DATA MAY VARY BY CONFIGURATION. SEE CONFIGURATION SECTION.

Maximum Operating Pressure	350 bar
Maximum Valve Leakage at 110 SUS (24 cSt)	0,7 cc/min.@350 bar
Minimum Pilot Pressure to Operate	1,5 [+ port 1 press./100] bar
Pilot Control Port	See Control Options
Seal kit - Cartridge	Buna: 990509007
Seal kit - Cartridge	Viton: 990509006

CONFIGURATION OPTIONS

Model Code Example: DBAPFCN

CONTROL	(F)	SPOOL CONFIGURATION	(C)	SEAL MATERIAL	(N)	MATERIAL/COATING
F External 1/8 NPTF Port		C Normally Open 1 to 3, Closed 1 to 2		N Buna-N		Standard Material/Coating
E External 4-SAE Port		H Normally Open 1 to 2, Closed 1 to 3		E EPDM		/AP Stainless Steel, Passivated
P External 1/8 BSPP Port				V Viton		